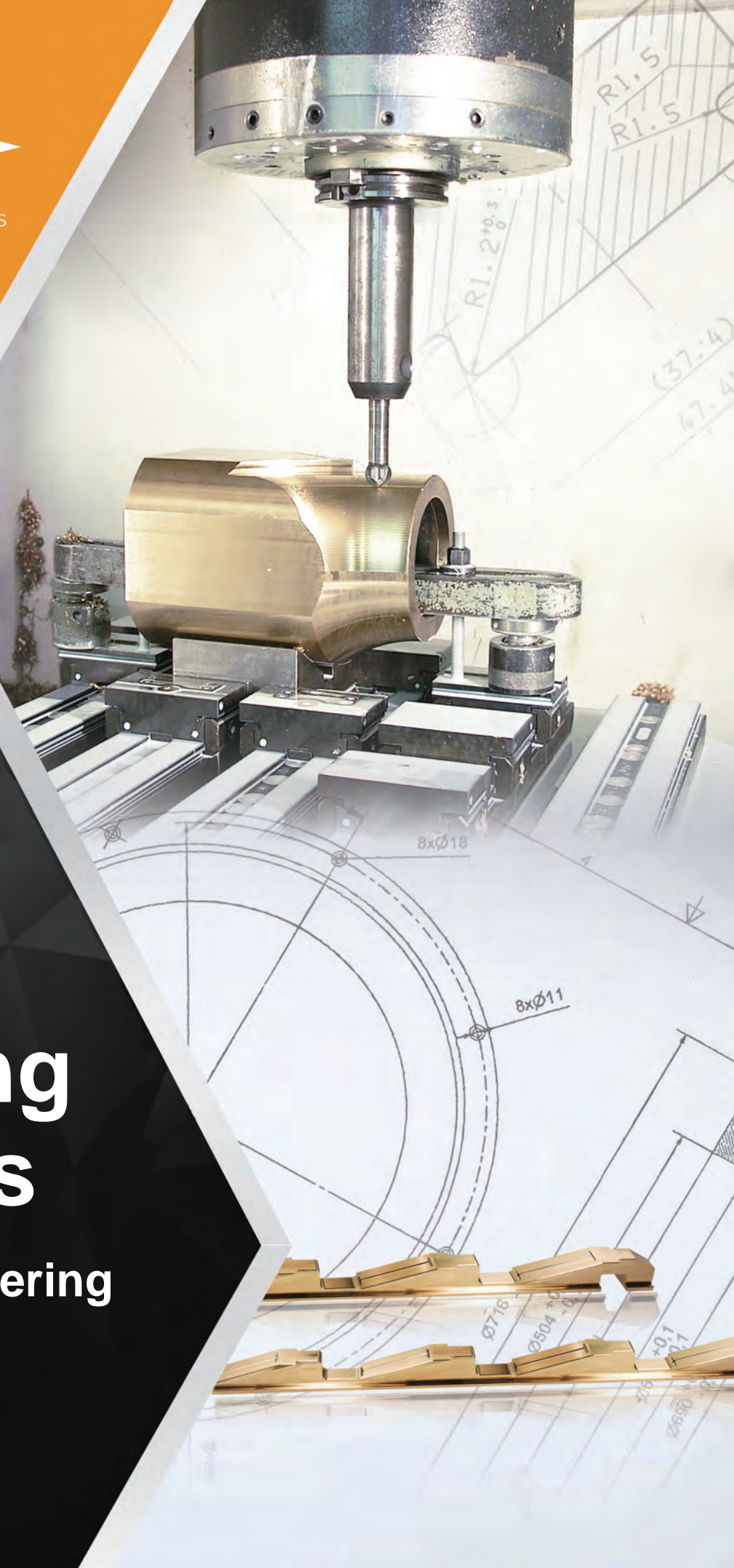




EXCELLENCE IN ENGINEERED ALLOYS



Machining Solutions

Precision Engineering
for Demanding
Applications

www.ampcometal.com

Introduction

AMPCO METAL is a leader in precision machining solutions for industries worldwide. Our expertise in machining high-performance **AMPCO®**, **AMPCOLOY®** and **HOVADUR®** alloys allowing us to offer our customers a seamless, high-quality solution tailored to their specific applications.

With a global network of five specialized machining centers and a commitment to quality, we deliver fully machined components that enhance operational efficiency, reduce downtime, and optimize performance.

As a vertically integrated manufacturer, we offer:

- ◆ In-house alloy production for consistent quality
- ◆ Advanced CNC machining for tight tolerances
- ◆ Rapid delivery and expert technical support

With AMPCO METAL, you get more than materials, you gain a trusted partner for advanced manufacturing solutions.

Value-Added Services

At AMPCO METAL, we go beyond machining, we provide comprehensive manufacturing solutions to help our customers maximize efficiency and quality.

- ◆ **Prototyping & Consulting**
Expert advice for custom applications.
- ◆ **Custom Machining & Precision Engineering**
CNC milling, turning, and EDM for complex geometries.
- ◆ **Global Technical Support & Rapid Delivery**
5 machining centers ensure fast turnaround times.
- ◆ **Quality Assurance**
Stringent quality control and inspection.



Technical Capabilities

- ◆ Global Machining Facilities: Germany, France, India, China, Brazil
- ◆ CNC milling (3-5 axis), CNC turning, grinding, EDM, wire-cutting
- ◆ Precision Tolerances
- ◆ Custom dimensions per customer specifications
- ◆ Strict compliance with international machining standards
- ◆ Quality Control & Certifications
- ◆ ISO-certified machining facilities
- ◆ Advanced metrology & 3D coordinate measuring systems

Why Choose AMPCO METAL?

- ◆ Consistent quality worldwide
- ◆ High-performance alloys for durability, conductivity & resistance
- ◆ Fast lead times & responsive customer support
- ◆ Customized solutions tailored to industry needs

Applications Highlight

Wear Resistance

AMPCO METAL's wear-resistant AMPCO® aluminum bronzes provide unmatched durability for bushings, bearings, wear plates, and sliding components. These alloys reduce friction and withstand high loads and impacts, ensuring extended service life.

Key Components

- ◆ Bushings & Bearings
- ◆ Wear Plates & Liners
- ◆ Sliding Components



Corrosion Resistance

Our corrosion-resistant AMPCO® and HOVADUR® alloys offer superior protection against oxidation, chemical exposure, and extreme environments. These materials extend equipment lifespan in marine, oil & gas, and chemical processing industries.

Key Components

- ◆ Marine Shaft Bearings
- ◆ Chemical Processing Components



Tube Bending

Our aluminum bronze alloys are engineered for precision tube bending applications. These alloys provide exceptional wear resistance, anti-galling properties, and enhanced sliding properties, ensuring smooth, defect-free bends while reducing tool wear.

Key Components

- ◆ Flexible Ball Mandrels
- ◆ Wiper Dies
- ◆ Bending Dies
- ◆ End Forming Punches
- ◆ Pressure Dies
- ◆ Clamping Inserts



Tube Forming

AMPCO® aluminum bronze alloys offer exceptional wear resistance, anti-galling properties, and extended tool life for tube forming and end-forming operations such as expansion, reduction, and flaring.

Key Components

- ◆ Forming Rolls
- ◆ End Forming Tools
- ◆ Flaring & Beading Tools
- ◆ Mandrels & Plungers

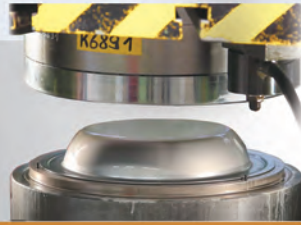
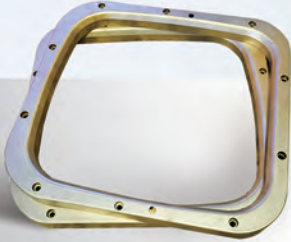


Deep Drawing

Our alloys provide exceptional wear resistance, anti-galling properties, and superior formability, making them ideal for deep drawing applications. Ensure longer tool life, reduced surface defects, and consistent forming results, even in the most demanding production environments.

Key Components

- ◆ Drawing Dies
- ◆ Punches
- ◆ Blank Holders

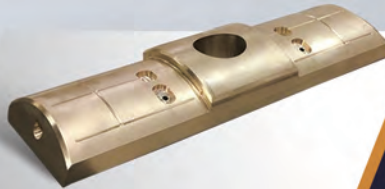


Steel Industry Solutions

AMPCO METAL provides high-performance copper-based alloys that improve efficiency in hot & cold rolling mills, blast furnaces, arc furnaces and continuous casting operations. Our materials resist high temperatures, extreme pressure, and aggressive environments.

Key Components

- ◆ Hot & Cold Rolling Mills: Work roll chocks, spindle slipper pads, and pressure plates
- ◆ Blast & Electric Arc Furnaces: Arc furnace electrode holders, tuyeres, oxygen lance holders, cooling plates, and continuous casting permanent mold.
- ◆ Mandrel Components: Wedges, bushings, and pressure plates.

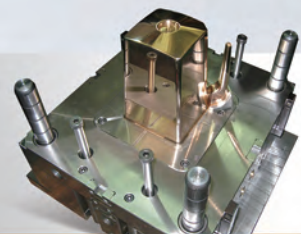
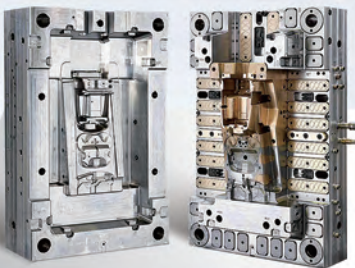


Plastic Injection & Mold Making

Our AMPCOLOY® and HOVADUR® K high-performance alloys optimize mold performance by enhancing heat transfer, reducing cycle times, and increasing mold longevity.

Key Components

- ◆ Core Pins & Inserts
- ◆ Mold Cavities & Cores
- ◆ Sprue Bushings & Nozzle Tips
- ◆ Ejector Sleeves & Pins



High-Pressure Die Casting

HOVADUR® alloys provide high thermal conductivity and wear resistance, ensuring faster cycle times, reduced defects, and extended tool life in die casting applications.

Key Components

- ◆ Pistons & Shot Sleeves
- ◆ Piston-Adapter Systems
- ◆ Cooling Inserts & Cores



Die Venting Systems

HOVAVENT® venting systems optimize gas evacuation, improving casting quality and reducing defects. Our materials ensure enhanced thermal conductivity, extended die life, and reduced downtime.

Key Components

- ◆ Chill blocks - Venting Systems



Resistance Welding

AMPCOLOY® and HOVADUR® alloys enhance resistance welding performance, ensuring higher weld quality, extended electrode lifespan, and reduced wear.

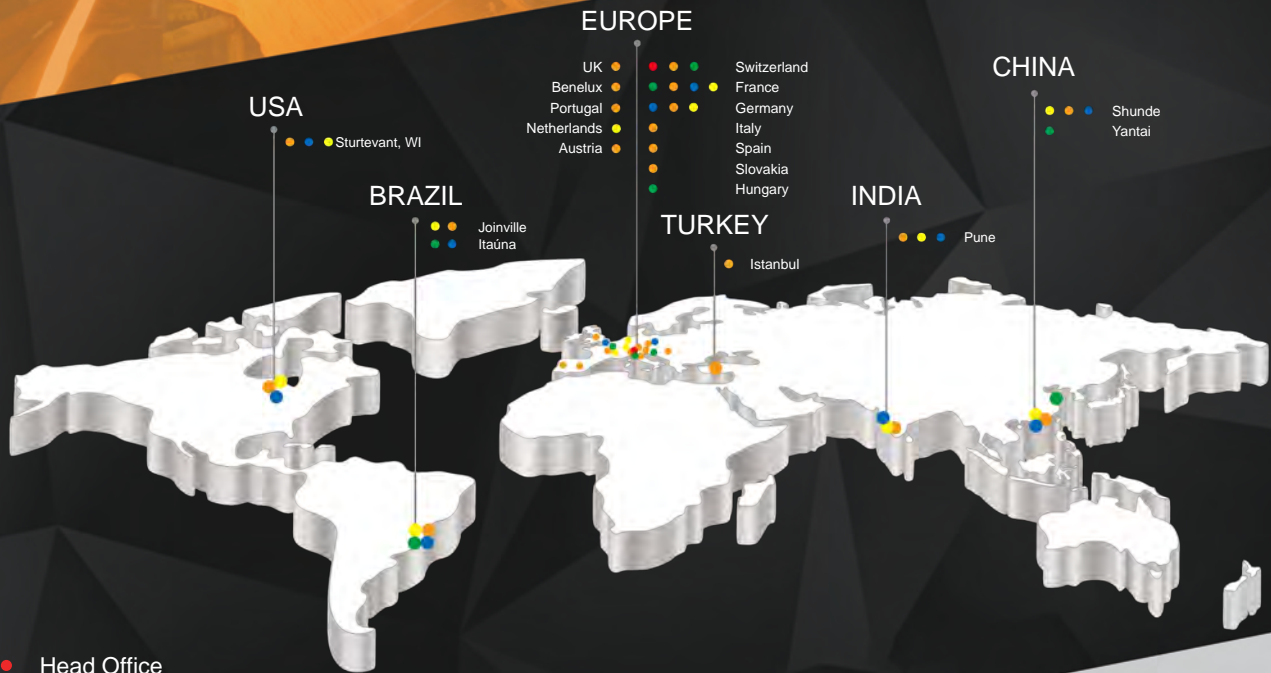
Key Components

- ◆ Welding Electrodes
- ◆ Backup Electrodes & Holders
- ◆ Seam Welding Wheels





EXCELLENCE IN ENGINEERED ALLOYS



- Head Office
- Foundry
- Machining Facility
- Distribution Center
- Sales Office



EUROPE (Headquarters)

AMPCO METAL S.A.

Route de Chésalles 48
P.O.Box 45, 1723 Marly
SWITZERLAND
Tel.: +41 26 439 93 00
Fax. +41 26 439 93 01
Info@ampcometal.com

BRASIL

AMPCO METAL Brasil Ltda.

Rua Dona Francisca 8400 - galpão 2
Zona Industrial Norte
Joinville, SC - 89219 - 600
Tel.: +55 47 3305 0020
Fax. +55 47 3305 0021
Infobrasil@ampcometal.com

CHINA

AMPCO METAL (Foshan) Co., Ltd

Warehouse 9-1 No 9 Xinyue road
Jinqiao Industrial Park, Wusha
Daliang town, Shunde, Foshan
Guangdong Province, P.R.China.
P.C.528333
TOLL FREE PHONE: 4008 899 028
Tel.: +86 (0) 757 2232 6571
Fax. +86 (0) 757 2232 6570
Infochina@ampcometal.com

INDIA

AMPCO METAL INDIA PVT. LTD.

A-8/4, Village - Nighoje,
Chakan MIDC, Phase IV, Tal : Khed
Pune – 410501, Maharashtra - INDIA
Tel.: +91 2135 610 810
Fax. +91 2135 610 811
Infoindia@ampcometal.com

U.S.A

AMPCO METAL Inc.

1221 Grandview Pkwy
Sturtevant, WI 53177
Tel.: +1 800 844 6008
Fax. +1 847 437 6008
Infousa@ampcometal.com

